

# Voice Over Wireless LAN (VoWLAN) Market / Deployment Update

- Patrick J. Kelly  
Getronics Solutions Developer  
[www.getronics.com](http://www.getronics.com)



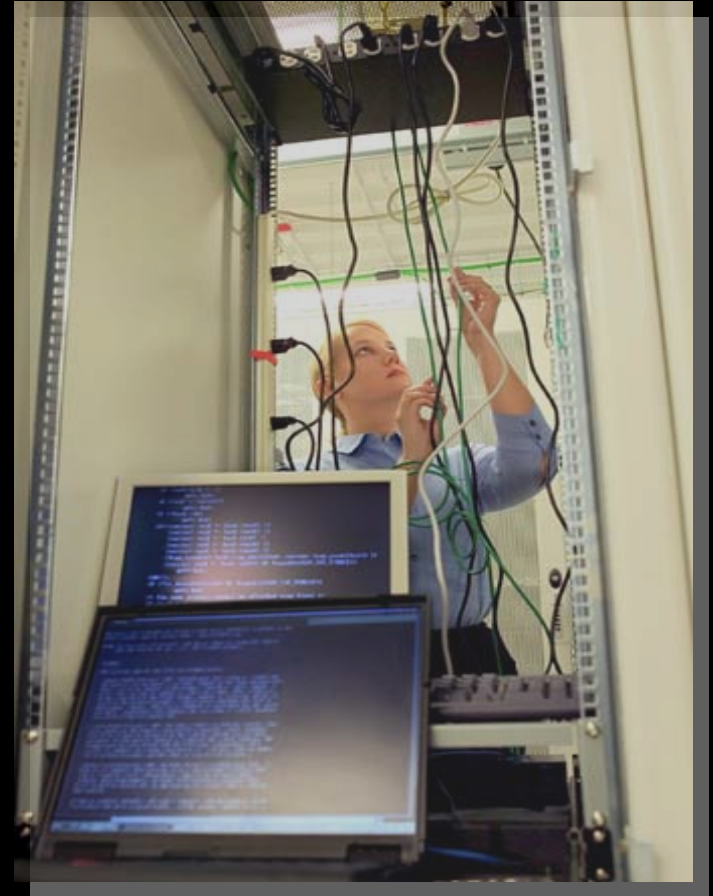
# What's Driving VoWLAN Adoption?



- Leverage enterprise wireless infrastructure for in-building mobile voice and data
  - Common technology
  - Common support organization
  - Common tools
- Increase “reachability” of high value employees
- “Voice-enable” business processes

# Architecting the Enterprise VoWLAN

- Define the business need for intra/inter-office mobility
  - Define mobile user profile(s)
  - Manage expectations (mobility versus quality)
  - Use the business requirements to validate the solution
- Be familiar with the technology
  - VoWLAN Survey/Design is not the same as traditional “data-only”



# Building the Enterprise VoWLAN



- ✚ Individual productivity
  - Enhanced “reachability”
  - Enhanced collaboration
- ✚ Enhanced business processes
  - Faster workflows
- Infrastructure and staff
  - Voice-ready WiFi
  - Voice-ready support organization and management tools
  - Shorter equipment lifecycle

# Dual Mode and Fixed Mobile Convergence (FMC)

- Nascent stages
- Laying the groundwork for future capability
- Still relatively complex
- Active development in the standards bodies
  - Technology is immature
  - Landscape is changing rapidly
- Not ready for extensive enterprise use
  - Many viable point solutions



# Enterprise Information Technology (IT): The New Mobile Voice Carrier



- Requires intelligent wireless management tools and professionals
  - In-depth Radio Frequency (RF) operational knowledge
- Intelligent devices to provide end-point based quality assessments (e.g. Real-Time Control Protocol Extended Reports (RTCP-XR))
- Set expectations!
  - Mobility versus Quality/reliability